

GPS NAVIGATOR GP-150/DUAL

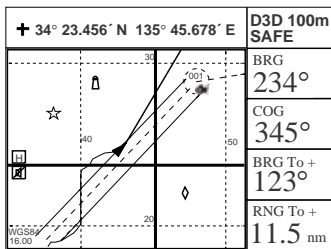
Operator's Guide

The purpose of this Guide is to provide basic operating procedures for this equipment. For more detailed information, see the Operator's Manual.

Selecting a Display Mode

Press **DISPLAY SEL** to select desired mode.

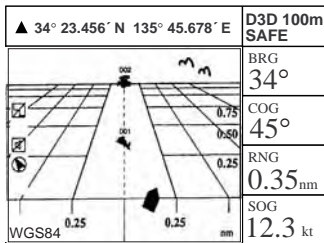
Plotter 1/Plotter 2



Ship's track and data

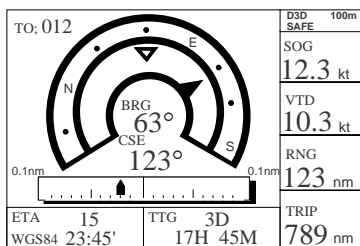
↑ This column does not appear on Plotter 2 display.

Highway



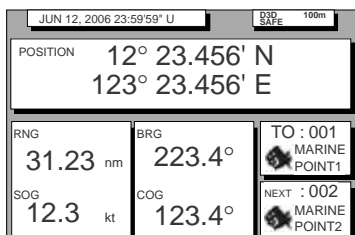
3D view of ship's track overlaid on intended course

Navigation



Graphic display of steering data

Data



Comprehensive navigation data display

Enlarging/Shrinking the Display

Press **ZOOM IN** to enlarge.

Press **ZOOM OUT** to shrink.

Shifting the Cursor

- 1) Press **CURSOR ON/OFF** to turn on the cursor.
- 2) Operate the cursor pad to shift the cursor.

Shifting the Display

- 1) Press **CURSOR ON/OFF** to turn off the cursor.
- 2) Operate the cursor pad to shift the display.
Press the **CENTER** key to shift own ship to the center of the display.

Centering Cursor Position

- 1) Press **CURSOR ON/OFF** to turn on the cursor.
- 2) Operate the cursor pad to position the cursor where desired.
- 3) Press **CENTER**.

Entering/Erasing Marks

- 1) Press **CURSOR ON/OFF** to turn on the cursor.
- 2) Operate the cursor pad to position the cursor where you wish to enter a mark.
- 3) Press **MARK**.

To erase any mark (except MOB), place the cursor on the mark and press CLEAR.

Selecting Mark Shape/Line Type

- 1) Press **MENU ESC** and **2**.
- 2) Press **▲** or **▼** to select Mark Shape (or Mark Line).
- 3) Press **◀** or **▶** to select mark shape (or mark line) desired.
- 4) Press **NU/CU ENT**.
- 5) Press **MENU ESC**.

Entering Event Mark

Press **EVENT MOB** momentarily.

Entering MOB Mark

- 1) Press **EVENT MOB** (about three seconds) until "Save MOB position" appears.
- 2) Press **NU/CU ENT**.

Starting/Stopping Plotting and Recording of Track

Press **PLOT ON/OFF**. "**H**" appears when recording is disabled. "**H**" disappears when recording is enabled.

Registering Waypoints

A waypoint can be entered by several ways. Below is the procedure for entry by the cursor.

- 1) Press **WPT RTE**.
- 2) Press **1** to select Cursor.
- 3) Operate the cursor pad to place the cursor on the position desired for a waypoint.
- 4) Press **NU/CU ENT**.
- 5) Press **▼** to select Mark column.
- 6) Press **◀** or **▶** to select mark shape.
- 7) Press **NU/CU ENT**.
- 8) Enter comment (maximum 12 alphanumeric characters).

- 9) Choose "ENTER" and press **NU/CU ENT**.
- 10) Press **NU/CU ENT**.

Registering Routes

- 1) Press **WPT RTE**.
- 2) Press **6** (**5** for Dual) to select Route Planning.
- 3) Press **▲** or **▼** to select route number.
- 4) Press **▶**.
- 5) Enter waypoint number (three digits).
- 6) Press **▼**.
- 7) Repeat steps 5 and 6 to enter next waypoint number.
- 8) Press **MENU ESC** twice to quite.

Setting/Cancelling Destination

Destination can be set by four ways. Below is the method for setting destination by the cursor.

- 1) Press **GOTO**.
- 2) Press **1** to select Cursor.
- 3) Place the cursor on the position to set as destination.
- 4) Press **NU/CU ENT** twice.

To cancel destination, press GOTO, 5, NU/CU ENT.

Setting the Arrival Alarm

- 1) Press **MENU ESC** and **4**.
- 2) Press **▲** or **▼** to select Arrival/Anchor.
- 3) Press **◀** to select "Arr."
- 4) Press **▼** to select "Alarm Range."
- 5) Enter arrival alarm range.
- 6) Press **NU/CU ENT**.
- 7) Press **MENU ESC**.

The buzzer may be silenced by pressing **CLEAR**.

PUB. NO. OSE - 44400 - A
(0602, HI MA) GP - 150/DUAL

