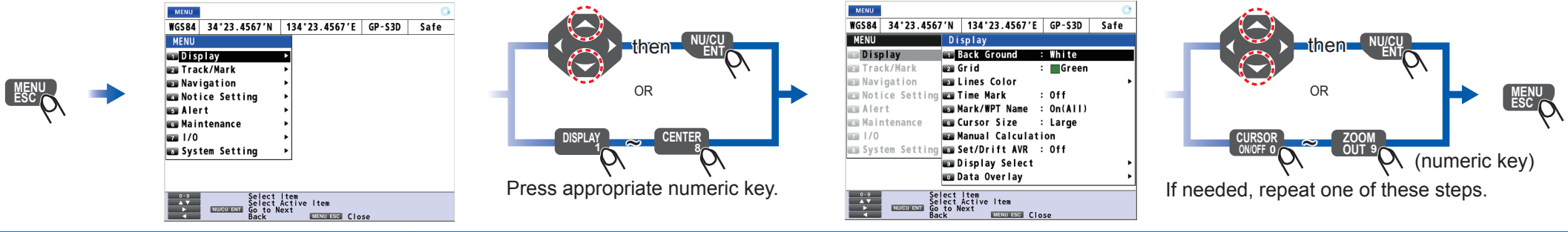


The purpose of this guide is to provide the basic operation for this equipment. For more detailed information, see the Operator's Manual.
All brand and product names are trademarks, registered trademarks or service marks of their respective holders.

How to operate the main menu



How to switch the operation mode

NU: North up
CU: Course up

Shifts display or cursor.

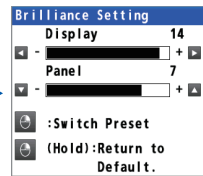
Goes back one layer in multi-layer menu.

Select the menu item.

Goes forward to one layer in multi-layer menu.

How to adjust the brilliance of the display and panel

BRILL



Display brilliance

Panel brilliance

How to open the list

LIST

No.	Name	LAT	LOX
0001	MARK1	34 56.2345' N	134 56.3456' E
0002	MARK2	35 22.3456' N	135 33.4567' E
0003	MARK3	36 33.4567' N	136 44.5678' E
0004	MARK4	37 45.6789' N	137 22.3456' E
0005	MARK5	38 11.2345' N	138 55.6789' E

Mark List

LIST

No.	Name	Status	DIST	Time
001	ROUTE1	3	162.4 NM	10h 35m
002	ROUTE2	2	120.8 NM	07h 20m

Route List

LIST

No.	Station	Information
0001	EAZAKI	Station Name : EAZAKI
0002	ABASHIRI	Station ID : 0500
0003	MATSUMAE	ID REF1/REF2 : 0434/0434
0004	HAMADA	Latitude : 35 49.8598' N
0005	TANGO	Longitude : 136 31.8592' E
0006	SAKATA	Datum : WGS84
0007		Operation Status : 00
0008	INUBOSAKI	Frequency : 320.5kHz
0009	HACHIJOJU	Bit Rate : 200bps
0010	NAGOYA	Distance : 20NM

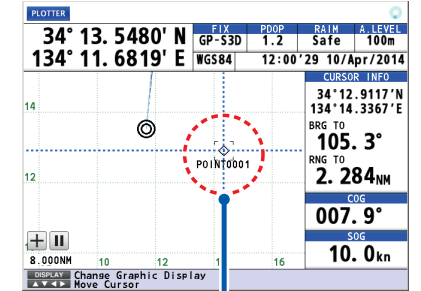
Station List
(Requires internal beacon receiver.)

How to turn the power on/off

Power button icon

How to open the context menu

For example, context menu for a mark.



Select a mark with the cursor pad.

Edit	
GoTo/Cancel	
Delete	
Name	: POINT0001
POS	: 34°14.6978' N 134°16.8534' E
Symbol	: ◊
Color	: White/Black



ACK/DELETE

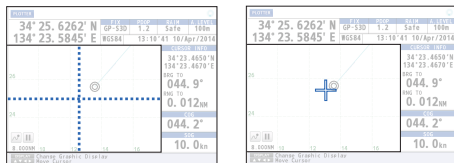
- Acknowledges an unacknowledged alert.
- Deletes all setting values on the setting window.
- Deletes registered data at the cursor-selected position.

CURSOR ON/OFF 0 to **ZOOM OUT 9**

- Selects and confirms the menu item.
- Enters a numeric character.

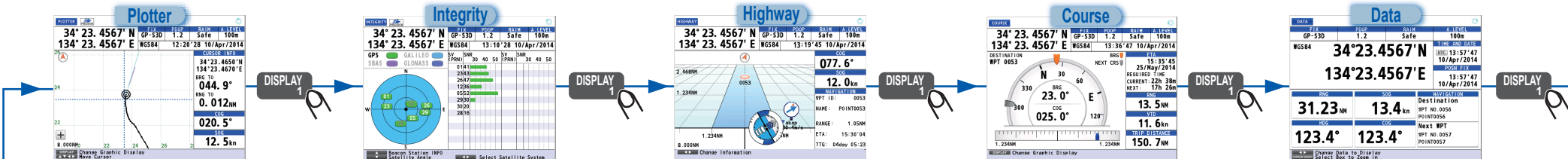
CURSOR ON/OFF 0 : Turn the cursor on/off.

CURSOR ON/OFF 0



Cursor on: Large Cursor on: Small
(Size selectable from menu.)

DISPLAY 1 : Select the display mode.



ROUTE 2 : Create a new route.



GO TO 3 : Set a destination.



MOB 4 : Set MOB as destination.



PLOT ON/OFF 6 : Plot and record ship's track.

PLOT ON/OFF 6 The pop-up message "Resuming Track Plot" appears.

To stop plotting.

PLOT ON/OFF 6 The pop-up message "Stopping Track Plot" appears.

ZOOM IN 7 **ZOOM OUT 9** : Zoom in/out the display.



MARK EVENT 5 : Put a mark.

With cursor on



With cursor off

MARK EVENT 5 The mark is put at own ship's position.

CENTER 8 : Center the cursor position or own ship's position.

With cursor on

Center the cursor position.

With cursor off

Center own ship's position.

