
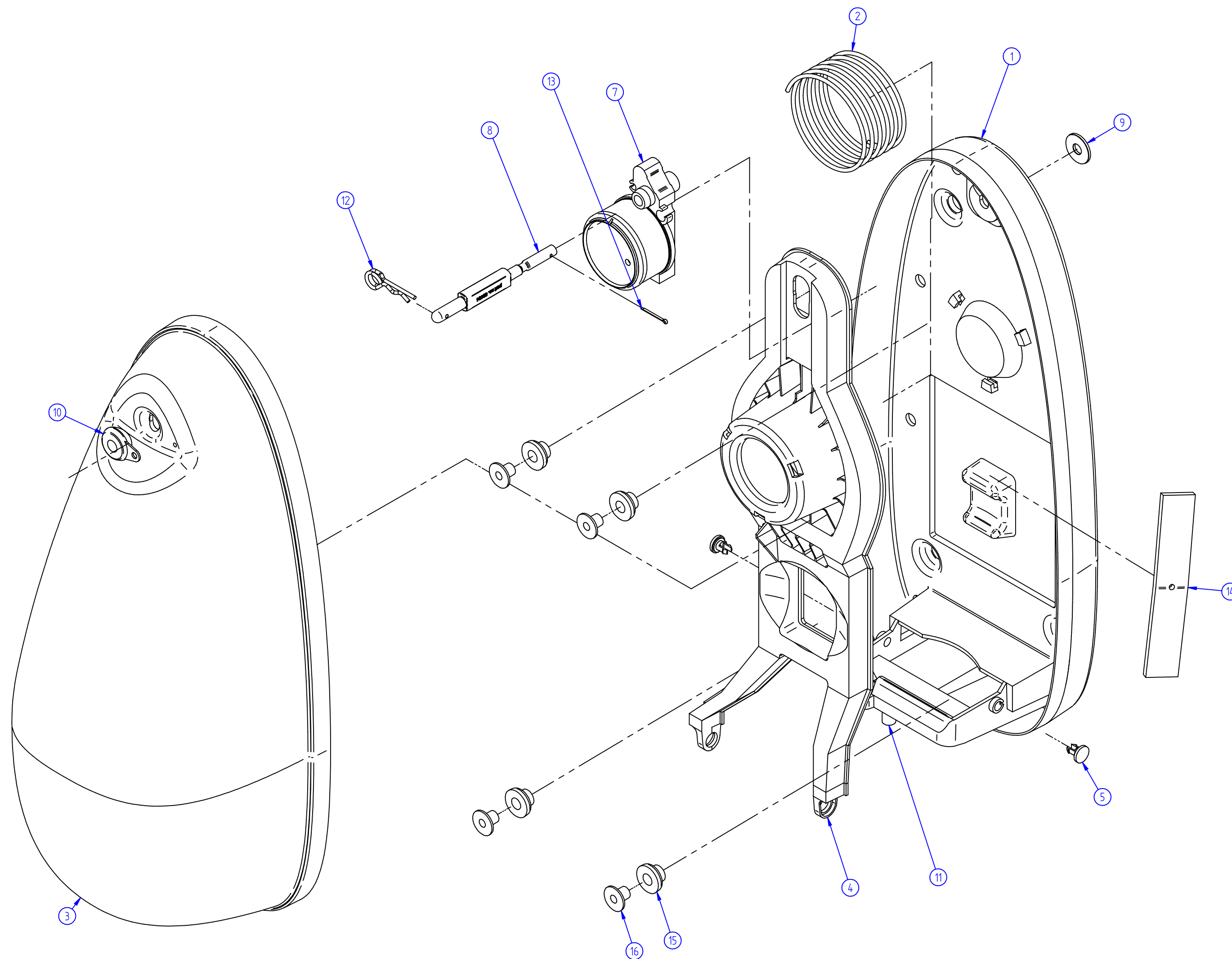


Rev	Symb	EM No	Sign	Date	Description / Change
A	-	TN		24.02.2010	First version
Revision History					

Material/Density/Mass:		This drawing is property of Jotron AS and must not be duplicated or used for manufacturing of any parts disclosed herein without permission from Jotron AS.	
General tolerance: NS-ISO-2768-1-m	General Surface Roughness, Ra: -		
Approved: Terje	Original Model: Terje		
Original Draft: Terje	Date: See Revision History	Size: A2	Scale: :
ASSY FB-6		Sheet: 1 / 3	Rev: A
M-85216			



Item Number	Document Number	Revision number	Title	Material	Quantity
1	M-85217	A	REAR COVER	ASA S510	1
2	M-85221	A	RELEASE SPRING		1
3	M-85218	A	FRONT COVER	ASA S510	1
4	M-85219	A	CATAPULT	Polyamid, PA6 +30% GF	2
5	M-85220	A	SNAP LOCK	Polyamid, PA6	2
7	M-94232		HYDROSTATIC RELEASE UNIT, HAMMAR H20		1
8			Plastbolt H20	Hostaform C27021	1
9	M-91388		WASHER, DIN9021 ϕ 8mm	A4	1
10	M-80187	B	WASHER DAMPER	Hostaform C 27021 BLACK	1
11	M-91448		MAGNET		1
12	M-92398		LOCK SPLINT 2,5mm HNS DOPPEL	A4	1
13	M-91548	A	DIN94 SPLINT ϕ 2x20	A4	1
14	M-80391	A	WEIGHT	Stainless Steel, AISI 316L	1
15	M-80186	B	VIBRATION ABSORBER	PTS-Thermoflex 65HH/E 9000, BLACK	4
16	M-80185		SLEEVE WITH COLLAR	BRASS, NICKEL PLATED	4

Rev	Symb	EM No	Sign	Date	Description / Change
Revision History					

Material/Density/Mass:		This drawing is property of Jotron AS and must not be duplicated or used for manufacturing of any parts disclosed herein without permission from Jotron AS.	
General tolerance:	General Surface Roughness, Ra:		
Approved:	Original Model:		
ASSY	Terje	Original Draft:	Date: See Revision History
FB-6		Terje	
Size: A2	Scale:	Sheet: 2 / 3	Rev: A
M-85216			